



# Bisley Residents Association

'Your Bisley' Newsletter No. 58, Spring 2024

You are invited to a joint B.R.A. Open Forum followed by the Bisley Annual Parish Assembly on Friday 22nd March at 7 p.m. in the Jubilee Room of the Village Hall.

**ALMAC BISLEY BRASS BAND: COME AND JOIN US!**

ALMAC BISLEY BRASS BAND:  
REMEMBERING THE FESTIVE SEASON. LOOKING FORWARD TO SUMMER



The main theme will be 'Neighbourhood Watch and Road Safety in Bisley'.

Guests will include the Mayor of Surrey Heath, Cllr. Pat Tedder together with County, Borough and Parish councillors, thus giving Bisley folk, the usual opportunity to speak directly to our elected representatives.

The Open Forum will be followed by the Annual Parish Assembly, hosted by Bisley Parish Council.

*Wine and light refreshments will be served.*  
Norman Holden & Nicki Rapley

## BRA Quiz and Fish & Chips Supper

On 24th November 2023 80 people enjoyed a not-too-serious Quiz and a delicious Supper provided by Ozzies. Quiz Winners were 'Chime for Change', those habitual quiz-fighters from West End!



A few notes - in words not music - from the Band. We had a wonderful festive season that started with a Festive Fun day in Guildford in November and ended with an outdoor carol service at St Marks, Westfield in Woking on the 23rd of December. In between small groups from the Band played at the West End Christmas Fair at the Gordon School; Horsell Christmas Market; West End Old Folks club; the annual carol service at the Vyne in Knaphill; the Darby and Joan Club at Lightwater and the Bisley Village Hall Christmas Tea. The full band also performed a sold-out Christmas concert at Bisley Village Hall on the 9th of December. Phew! Oh yes....And we also found time to decorate a tree for the Christmas Tree Festival. Here are all of us and a big audience, at the Christmas Concert (Photo below).

Our next big engagement is our Spring Concert on Saturday the 18th of May. We are busy rehearsing for the concert but also developing our capabilities and helping new players to develop theirs. If you would like to find out more about us, learn to play a brass instrument or perhaps return to playing you are welcome to get in touch directly with [graham.davey6@aol.com](mailto:graham.davey6@aol.com) or via the contacts page on our website: <https://almacbisleybrassband.org/> Our present schedule for the summer months includes: Guildford Castle Gardens Bandstand, 9th June; the Strawberry Fayre on the Village Green, 23rd June, Brass on the Grass (Village Green), 14th July; and Celebration of the Last Night of the Proms, 28th September.

Look out for further dates and news on our Facebook page <https://m.facebook.com/almacbisleybrassband/>

We thank Bisley Parish Council for their ongoing support and funding for 'Your Bisley' Newsletters.  
**Please see page 4 for B.R.A. new member / renewal forms.**

Inside this issue:	Page
<i>Bisley Remembers</i>	2
<i>'Teas on the Rec'</i>	2
<i>Bisley Village Hall</i>	3
<i>Scouting &amp; Guiding</i>	3
<i>K'hill Community Fridge</i>	3
<i>Bisley &amp; W.E. Food Bank</i>	3
<i>Bisley CofE School</i>	4
<i>Other Village Issues</i>	4

## BRA Diary Dates 2024

- ▶ Open Forum 22nd March 2024
- ▶ Quiz / Supper 17th May
- ▶ Strawberry Fayre 23rd June
- ▶ Brass on the Grass/Picnic July
- ▶ Open Forum & AGM 4th Oct.
- ▶ Quiz / Supper 25th November

## Bisley Parish Council update

Bisley Parish Council Offices are in the Village Hall.

However, meetings with councillors, the clerk or RFO can be arranged and take place at the Pavilion.

The postal address for the Council is: Bisley Parish Pavilion, Pavilion Lane Off Shaftesbury Road GU24 9EN

Contact the Clerk to the Council, Nicki Rapley.

Email: [clerk@bisleyparishcouncil.gov.uk](mailto:clerk@bisleyparishcouncil.gov.uk)  
Mobile: 0791 7417957

[www.bisleyparishcouncil.gov.uk](http://www.bisleyparishcouncil.gov.uk)

**The Parish Councillors** are: Cllrs. Steve Moore (chair), Amanda Price (Vice Chair), John Hutchinson, Hillary Kendall, Ying Perrett and Wendy Evans.

### The current Surrey Heath Borough

**Councillors** for Bisley and West End Ward are: Cllrs. Liz Noble, Sarbie Kang and Ying Perrett.

**The Surrey County Councillor** representing Bisley & West End, Lightwater and Chobham is Cllr. Rebecca Jennings-Evans.

**The Member of Parliament** for Surrey Heath is Michael Gove MP.

**Bisley Parish Council** has recently upgraded the lighting in the car park by the Village Hall for environmentally friendly low-cost LED bollards, which replaced the old columns which were no longer fit for purpose. Together with the recent white lining and installation of a cycle rack, the car park is looking much smarter.

In the next couple of months, the play space and the book exchange on Clews Lane will be re-painted. However, the exact dates are dependent on the weather.

Village Issues

Bisley Remembers

**Edna Holt 1929-2023**

We mourn the passing of a lady who, while not a Bisley resident, had a great impact on the life of our community.

Edna came to West End in 1962. She was involved in Guiding and became a Guide Leader for 17 years. Edna was also a fundraiser for Guide Dogs for the Blind. She delivered parish magazines, she was a Church sideman, reader, arranged the Church flowers, attended to the graveyard and was a Church cleaner

Because of her many good works in and around West End, Edna was named West End Citizen of the Year in 2016. The citation listed many of the tireless contributions she made to community life.

Of course we in Bisley have had cause, in recent years, to be grateful to Edna for her constant presence at Teas on the Rec. Who can forget her – formidable – organising and running of the TOTR Raffle, week after week in the summer months. Until very shortly before her passing, she was still driving everywhere in her own car, loading and unloading the Raffle prizes – and reprimanding us all if we got something wrong! *We salute the memory of this remarkable lady, we will miss her and we offer her family our sincerest condolences.*



**Keith Bush 1943-2024**

We mourn the passing of Keith Bush, a much-loved and distinguished resident of our neighbour village of West End. He was a West End Parish Councillor, then Surrey Heath Borough Councillor for many years, taking office as Mayor of Surrey Heath, with his beloved Sue by his side as Mayoress, in 2006-07.

Through all those years Keith worked tirelessly for West End and for the Borough. Tangible evidence of his achievements can be seen, for example in the enlargement of West End's fine Sports Pavilion - and the bowling green and tennis court, designed by Keith and built under his very effective supervision – and in much of the shopping centre development in Camberley.

I personally have good memories of sitting beside Keith in the Parish Church choir through many Sunday services – and weddings, where we sometimes had a quiet giggle at the occasional unusual choice of hymns!

People like Keith are irreplaceable. *He will be missed and we offer to Sue and the family our sincerest condolences.*



**Barbara Preece 1929 - 2024**

With immense sadness, we report the passing of our dear friend, Barbara. **This is a tribute from her daughter Rachel:-**

“It was with sadness that I share news of the death of Barbara, My loving Mum, dedicated wife to Stan, caring sister to Hilda darling Granny a wise, playful Great Granny and dedicated cat lover. You will also know her as fantastic fun, trustworthy friend, and generous, helpful neighbour. As we know too, Barbara was immensely strong, determined kind and resilient. Barbara grew up in Scarborough, trained as a nurse in Leeds and moved south for a Role at Kingston Hospital. She then met Stan and they married in 1960, later moving to Cedar Grove, Bisley. They were very happily married for 48 years.

Barbara loved her garden and the trees, wildflowers, birds, and animals. She loved her friends and neighbours and was in turn loved and, when she needed it, looked after. She supported Bisley Common Society, raised (with Stan) thousands of pounds for Cancer Research, volunteered at the “Old Peoples” Day Centre etc etc. Her Bric a Brac Stall on the Green was a regular feature for years.

Perhaps most famously she sourced, wrapped presents for the Lucky Dip at Teas on the Rec for many years. We’ve calculated that every Thursday in summer over 13 years, Barbara averaged 25 prizes a week, this was 3,575 lucky dip prizes! She continued volunteering until the age of 91!

Barbara’s hard work and community dedication was recognized when she received Bisley Citizen of the Year award in 2016 – and she had recognition and support from everyone who knew her.. Special thanks to neighbours Kay and Mary, who did so much to help Mum in those last years

Barbara moved to Marple, Stockport in 2022, to be nearer to family and to access more care. She continued to show strength, determination and to take pleasure from 'Getting outside' She was greatly loved and gave much love.”

*We offer to Rachel and Barbara’s family and many friends our deepest condolences.*



**Michael Handford 1930-2024**

With immense sadness we report the death of a dear friend and one of Bisley’s best-loved residents Mike Handford.

Mike was born in British Columbia, Canada and in the course of an interesting and eventful life came to live in Bisley. His mother was fondly remembered as the Head Teacher at Bisley School for many years.

Mike has been, in his quiet, unassuming way, an almost indispensable presence at every Bisley event and it’s difficult to imagine such events as Teas on the Rec without Mike’s never-failing support. We will miss him.

*We offer to his niece Ebba and her husband Ian and all Mike’s family our deepest condolences*

*Norman Holden*



**As we go to press it's our sad duty to report the death of a much-loved and respected Bisley man Robert Willis ((Bob) Smith who would have been 93 next month. We hope to include a full tribute in the next Newsletter.** *Norman Holden*

Bisley 'Teas on the Rec'

**It was a great day for Bisley!**

The 2023 Surrey Heath Volunteer Award was presented to the TEAS ON THE REC team, in recognition of their twelve years of, not only Thursday afternoon summer tea parties bringing together people of all ages from Bisley and beyond - but also raising over £115,000 for dozens of deserving charities.

The Award was presented by The Mayor of Surrey Heath Cllr Pat Tedder to Ann Forrest and Chris Bixley - and tributes were also paid to the third key member of the team, Pauleene Hammett who was unable to be at the event.



**Message from Chris**

It’s been a sad time for ‘Teas on the Rec’. Over the past months three of our original team have passed away. The ‘one and only’ Edna, who tirelessly sold so many raffle tickets for us and Barbara who wrapped lucky dip prizes for the children and manned the stall with her friend Ann Kingcombe. Mike always supported us practically, financially and with common sense and wisdom.

They will all be greatly missed and we offer our sympathy to their families.

**Our coffee mornings continue on the first Thursday of the month from 10am – 12 noon in Bisley Village Hall.’**



## Village Issues

### A VERY SPECIAL YEAR FOR BISLEY VILLAGE HALL

Planning for the 150th Anniversary commemoration event has already started and we would welcome the involvement of local people both in the preparations and on the day. We will be able to tell you more in the next edition of this Newsletter.

In the last few months the Hall has continued to thrive. However, we are not complacent. At our AGM in November we were able to report good progress. Our finances were (and are) in good shape; we have more bookings from a more diverse range of people and for a wider range of uses than ever before and there have been significant improvements to the premises. Of course, as I have said many times before, it's an old building and – in the words of Ellie Goulding's song – "Anything Could Happen"!

It has also been an enjoyable and fulfilling time. It's been lovely to see the Hall packed to the doors for events such as the BRA quiz in November, Almac Bisley Brass Band's Christmas Concert and the Hall's Christmas Tea in December. And it's good when the Hall is able to support the community through such events as the gathering (arranged by the Parish Council) following the Remembrance Service **and our wonderful Community Café (open Mondays 10 to 12, all welcome)**

We have another busy year ahead. We get all kinds of support from a lot of lovely people but if you would like to get involved please get in touch with me, [chair@bisleyvillagehall.org](mailto:chair@bisleyvillagehall.org) or – if it's to do with heritage matters – Sue Smith or Dave Grist (see insert above).

We are busy, but there is space for a few more. If you are interested in booking the Hall for regular use or for a one-off special occasion, visit our website: <https://www.bisleyvillagehall.org/>. To see what groups who regularly use the Hall offer go to <https://www.bisleyvillagehall.org/regular-hall-users>. To keep up to date with what's happening at the Hall you might like to visit our Facebook page:



**BISLEY VILLAGE HALL**  
Heritage Team



2024 will mark the 150th Anniversary of the opening of the Shaftesbury Society Schools' Chapel (now BISLEY VILLAGE HALL)

We are looking for volunteers who may have an interest in local history to join us investigating the life of the Chapel and Schools, together with their influence and impact on the village and their lasting legacy, for a very special celebration on Sunday 27th October 2024 (a date for your diaries)

If you are interested in helping please contact :-  
Sue Smith 01483 487843 [susan.smith983@ntlworld.com](mailto:susan.smith983@ntlworld.com)  
Dave Grist 01483476113 [dave@gristy.net](mailto:dave@gristy.net)

## SCOUTING AND GUIDING IN BISLEY

Many of you will have been involved with Scouting and Guiding in Bisley over the years either directly or indirectly through your children.

The HQ building is now 50 years old. It holds many memories for hundreds of us Bisley residents and it is still going strong today with nearly 100 scouts and guides going through the doors every week. We are fortunate to have so many volunteers, leaders and caring helpers that help, but we could always do with more – especially with the younger children.

Should you consider becoming a volunteer, a leader or helper, I would love to hear from you [hqinfo@1stbisleyscouts.org](mailto:hqinfo@1stbisleyscouts.org). If there are other ways you would like to support Scouting / Guiding in Bisley, either with knowledge or talents that you'd like to present, demonstrate or share at a meeting to the children or with fund-raising please contact myself initially via e-mail on [hqinfo@1stbisleyscouts.org](mailto:hqinfo@1stbisleyscouts.org)

The fifty-year-old building has a fair share of maintenance to regularly keep it going, and to allow it to run for even longer we will need to explore options for funding for various projects. We shall keep you updated, as community support and help is always welcome.

The Hall is available for hire for Children's parties and the like up to the age of 11. Minimum fee is £40 for 4 hours plus a refundable deposit. Please contact the booking officers via email on [hqbookings.bisley@gmail.com](mailto:hqbookings.bisley@gmail.com)

The next scouting plans for the next few weeks are well underway for the groups:

Explorer Unit (14 -17) - The DofE(Duke of Edinburgh) training starts this term, wish you all good luck  
Scouts (10.5 – 14) Preparing for an Expedition Challenge in Ashdown Forest and some good practice hikes  
Cubs (8-10.5) - Workshop by the Surrey Museum  
Beavers (6-8) - Took part in the Great British Bird Watch and will build upon that event

Lastly there is a fabulous opportunity where one of the scouts will join in a five day international trip going on the battle of the Somme in July.

Many thanks, Eleri, Assistant Group Scout Leader, 1st Bisley Scouts



## Knaphill Community Fridge, opened May 2019

Our aim is to take the food that is still safe to eat and redistribute that to the local community before it goes into the bin. Food that ends up in landfill emits green house gases as it rots down, in particular methane, a gas that is at least 25 times more potent than carbon dioxide. A horrifying 1/3 of all food produced for humans globally goes to waste (Hubbub) Knaphill Community Fridge is open to everyone, no referral is needed. Each month we repurpose over five tonnes of food and drink that would have otherwise gone to waste.

**We open 11am Monday - Friday at Holy Trinity Church, Chobham Road** and you can follow us on Instagram and Facebook. We often can offer a wide range of breads, vegetables and fruits collected from local supermarkets by our team of 60 volunteers.

We work alongside a free Pop Up Coffee Bar at Holy Trinity Church Mondays, Wednesdays and Fridays 8.30-10am working to build community, improve well being and mental health as well as encouraging a healthier diet through our 'grow your own' seed and plant swaps in the spring.

If you are interested in volunteering or donating please contact [knaphillcommunityfridge@htandstschurch.org](mailto:knaphillcommunityfridge@htandstschurch.org)

*Jules Hopkins*



**Bisley and West End Food Bank** continues to serve residents experiencing hardship. Please see the web site [bisleywestendfoodbank.org](http://bisleywestendfoodbank.org) regarding access to this facility and further information.

Food and financial donations, and support from volunteers welcome.

'Your Bisley' Newsletter No. 58  
Spring 2024

Editor: Jim Clarke 'Phone 01483 481437  
email: editor@bisleyresidents.org.uk

We are on the web  
www.bisleyresidents.org.uk

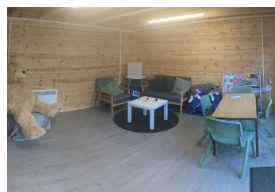
### Bisley Residents Association Committee 2023/24

Chairman: Norman Holden (chairman@bisleyresidents.org.uk)  
2 Quince Drive, Bisley, GU24 9RT. 'phone 01483 830282  
Vice Chair: Jim Clarke (vicechair@bisleyresidents.org.uk)  
Treasurer: Alex Summers (treasurer@bisleyresidents.org.uk)  
Secretary: Liz Colvin (secretary@bisleyresidents.org.uk)  
Membership Secretary & Webmaster: Ray Colvin (membership@bisleyresidents.org.uk)  
Committee Members: Chris Bixley, Nicki Rapley and Paul Hollylee

### Village Issues



### The Well Being Quad and Nurture Nest at Bisley C. of E. Primary School & Foxcubs Nursery



At Bisley we value and understand the importance of pupil well being.

We have now transformed the quad in the centre of the school, that some might remember had a tree in it, to a Well Being Quad. There is sensory equipment in the quad which allows us to create sensory trails for the children. Following our fundraising efforts last summer and the support of Friends of Bisley School we have been able to build the 'Nurture Nest' within the well being quad. This is a place where children and families can be supported and has multiple uses. Our next phase is to build a sensory garden around the edge of the quad – watch this space!  
Head Teacher, Clare McConnell

## STRAWBERRY FAYRE

Date for your diaries  
**Sunday 23rd June 2024**

Further information: Bisley Village Hall website:  
www.bisleyvillagehall.org

Bisley Strawberry Fayre Committee

### WEBCare

#### West End & Bisley Care and Good Neighbour Group.

*Do you sometimes need help with transport?*

If friends, family or your usual support cannot help, we can help with visits to:

- the surgery or hospital (including London)
- the dentist, health centre or hairdresser
- visit a friend or go food shopping.

We provide practical short-term help seven days a week. **Phone: 07713 915393**  
[line open 10 to 12 noon Monday to Friday]

We ask for voluntary contributions to reimburse our drivers. New volunteers to drive or man our phone are always welcome.

**No big or regular commitment.**  
For information call the number above.

### Songs of Praise



Come and sing some of your favourite hymns at our 'Songs of Praise' Service on the second Tuesday of the month at Holy Trinity Church, West End, starting at 2.30 p.m. on March 12th, April 9th, May 14th and June 11th. Followed by Tea and cake, and a chance to chat. **All welcome. Further details if needed**

from: Alison Clay 01483 481249 (Pastoral Assistant).  
WebCare can help with transport.

**Bisley Womens Institute** We began the New Year discussing the four NFWI resolutions for this year. We wait to hear which one received the most votes nationwide and will be presented at the June Annual Meeting. At our February meeting, we welcomed a member of the Knaphill Community Fridge. She gave us an excellent presentation and talk explaining how it began and developed and how it has helped so many of the local community. The craft group has been busy making hearts for the latest post box topper and Spring influenced Easter and Birthday cards. This year we have already enjoyed a theatre visit, walks, afternoon tea and a pub lunch. We are a very active group!! Visitors and new members are always welcome at our meetings on the second Wednesday and Craft afternoons on the fourth Wednesday in Bisley Village Hall at 2pm. Contact: Tina 01483 829663 www.bisleywi.co.uk



**The BRA would like to encourage all members to renew their membership for the year 2024 and warmly welcomes new members.** This enables us to work on your behalf on issues affecting our village and helps to provide the 'Your Bisley' Newsletter. We hold a prize draw for all paid-up members with each newsletter (or Forum). If you would like to participate, please renew your subscription or join by filling in the form below. **(Data will be held and used only by B.R.A.)**  
**Congratulations to the winner of this Newsletter prize draw Mrs. Jones**

#### **Bisley Residents Association. New Member / Renewal Application Form.** (Please delete as appropriate)

Please accept my membership of the Bisley Residents Association, valid to 31st October 2024, for which I enclose my subscription of £..... Date: ..... (Please tick boxes below)

Title(s): ..... Name(s): ..... Email: .....

Address: ..... Telephone No: .....

**Annual Subs:** Individual £7.00 [ ] Student / Senior Citizen £5.00 [ ] Senior Couple £10 [ ] Couple / Family £12.00 [ ]

**Method of Payment:** Cash [ ] Cheque [ ] Please tick if you require a receipt [ ]

**Please send to:** Membership Secretary, Ray Colvin, 20 Angelica Rd., Bisley, GU24 9EY or see website for form or email membership@bisleyresidents.org.uk

**Please make cheques payable to Bisley Residents Association.**